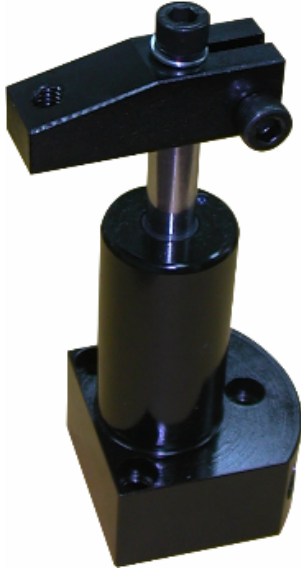


030 系列

转角油缸-下法兰式

安装形式: 管式与板式一体



Application

- n It is not necessary to manufacture hole for installing, you just need to use bolt to fix the clamp on fixture platen. It is helpful for you to clamp thicker workpiece because the main structure of cylinder body is on the fixture platen.
- n Installing is very simple, you just need 3-4 pcs of bolts to fix your clamp cylinder, and the mounting type has piping mounting and manifold mounting. It has single acting and double acting type.

Feature

Double acting

Oil circuits control clamping and unclamping, you can control the clamp and unclamp by changing the direction of direction valve.

Single acting

The design for oil circuit is simpler, it is not necessary to design for unclamp, it can return back to original position by spring, the system design is simple because of few accessories.

Note

- n It can return back to position under free load.
- n The blot for 050 series and 030 series is the same, they are interchangeable.
- n Please be careful not to let coolant and chip be sucked into cylinder body when you machine parts. If the oil is polluted, please change it to new oil to protect the life of cylinder.
- n Please keep flow velocity not over max. value.

Ordering example:

| 030 Base No. | L Swivel Direction | D Acting Type | - 92 Type |
|------------------------|---------------------------------|--------------------------------------|---|
| (Bottom Flange) | L: Left R: Right | S: Single Acting D: Double Acting | 11 22 52 92 121 202 352 |

公司地址: 上海市静安区新闻路 1161 号 A1 室 邮编 200041

电话: 021-51872743 传真: 021-62275540

公司网站: www.fdzc.net E-mail: chengff@sh163.net

030 系列

转角油缸-下法兰式

安装形式: 管式与板式一体

| 030LS/030RS – Hydraulic Swing Clamps, Bottom Flange, 35-350 kg/cm ² , Single Acting | | | | | | |
|--|---------------------------|----------|----------|-----------|-----------|-----------|
| Left 90° | 030LS-22 | 030LS-52 | 030LS-92 | 030LS-121 | 030LS-202 | 030LS-352 |
| Right 90° | 030RS-22 | 030RS-52 | 030RS-92 | 030RS-121 | 030RS-202 | 030RS-352 |
| Operating Pressure | 35-350 kg/cm ² | | | | | |
| Acting Type | Single Acting | | | | | |
| Clamp Force (kN) (350 kg/cm ²) | 210 | 490 | 800 | 1070 | 1740 | 3310 |
| Clamping Stroke (mm) | 8 | 10 | 12 | 13 | 14 | 16 |
| Total Stroke (mm) | 16.5 | 22.6 | 22.1 | 28.4 | 27.9 | 30.0 |
| Effect Area – Clamp (cm ²) | 0.77 | 1.81 | 3.16 | 4.06 | 7.10 | 12.39 |
| Effect Area – Unclamp (cm ²) | -- | -- | -- | -- | -- | -- |
| Oil Capacity – Clamp (cm ³) | 1.31 | 4.10 | 6.88 | 11.47 | 19.99 | 37.20 |
| Oil Capacity – Unclamp (cm ³) | -- | -- | -- | -- | -- | -- |
| Max. Oil Velocity (L/min) | 0.2 | 0.4 | 1.0 | 1.6 | 2.3 | 3.9 |
| Clamp Arm | CAS-22 | CAS-52 | CAS-92 | CAS-121 | CAS-202 | CAS-352 |
| A (mm) | 112 | 135 | 151 | 171 | 173 | 195 |
| C (mm) | 80 | 93 | 104 | 113 | 115 | 121 |
| φD (mm) | 27.9 | 34.8 | 47.8 | 47.8 | 63.8 | 80.0 |
| D1 (mm) | 47.2 | 54.1 | 70.1 | 66.8 | 85.1 | 100.1 |
| D2 (mm) | 45 | 57 | 54 | 73 | 70 | 89 |
| φF (mm) | 10 | 16 | 25 | 22 | 32 | 38 |
| H (mm) | 14 | 14 | 12 | 16 | 12 | 12 |
| K (mm) | 16 | 19 | 25 | 30 | 30 | 40 |
| N (mm) | 15.5 | 19.1 | 26.9 | 25.4 | 35.1 | 44.5 |
| P (mm) | 24 | 40 | 45 | 51 | 55 | 68 |
| R (mm) | -- | -- | 25.9 | -- | 25.9 | 25.9 |
| S (mm) | -- | -- | 23.6 | -- | 29.0 | 34.5 |
| U (mm) | 40 | 50 | 42 | 64 | 55 | 70 |
| φU1 (mm) | 42 | 50 | -- | 64 | -- | -- |
| φV (mm) | 5.6 | 6.9 | 6.9 | 8.9 | 8.4 | 10.7 |
| X (mm) | -- | -- | 28.7 | -- | 35.1 | 41.7 |
| Z° | 60 | 110 | -- | 110 | -- | -- |
| Weight (kg) | 0.5 | 1.1 | 2.0 | 1.6 | 3.5 | 5.5 |

公司地址: 上海市静安区新闻路 1161 号 A1 室 邮编 200041

电话: 021-51872743

传真: 021-62275540

公司网站: www.fdzc.net

E-mail: chengff@sh163.net

030 系列

转角油缸-下法兰式

安装形式: 管式与板式一体

| 030LD/030RD – Hydraulic Swing Clamps, Bottom Flange, 35-350 kg/cm ² , Double Acting | | | | | | | |
|--|---------------------------|----------|----------|----------|-----------|-----------|-----------|
| Left 90° | 030LD-11 | 030LD-22 | 030LD-52 | 030LD-92 | 030LD-121 | 030LD-202 | 030LD-352 |
| Right 90° | 030RD-11 | 030RD-22 | 030RD-52 | 030RD-92 | 030RD-121 | 030RD-202 | 030RD-352 |
| Operating Pressure | 35-350 kg/cm ² | | | | | | |
| Acting Type | Double Acting | | | | | | |
| Clamp Force (kN) (350 kg/cm ²) | 130 | 220 | 560 | 900 | 1160 | 1870 | 3380 |
| Clamping Stroke (mm) | 7 | 8 | 10 | 12 | 13 | 14 | 16 |
| Total Stroke (mm) | 13.0 | 16.5 | 22.6 | 22.1 | 28.4 | 27.9 | 30.0 |
| Effect Area – Clamp (cm ²) | 0.45 | 0.77 | 1.81 | 3.26 | 4.06 | 7.10 | 12.39 |
| Effect Area – Unclamp (cm ²) | 0.97 | 1.55 | 3.81 | 8.06 | 7.94 | 15.26 | 23.74 |
| Oil Capacity – Clamp (cm ³) | 0.66 | 1.31 | 4.10 | 6.88 | 11.47 | 19.99 | 37.20 |
| Oil Capacity – Unclamp (cm ³) | 1.31 | 2.62 | 8.69 | 17.70 | 22.94 | 42.61 | 71.38 |
| Max. Oil Velocity (L/min) | 0.2 | 0.2 | 0.4 | 1.0 | 1.6 | 2.3 | 3.9 |
| Clamp Arm | CAS-11 | CAS-22 | CAS-52 | CAS-92 | CAS-121 | CAS-202 | CAS-352 |
| A (mm) | 95 | 112 | 135 | 151 | 171 | 173 | 195 |
| C (mm) | 70 | 80 | 93 | 104 | 113 | 115 | 121 |
| φD (mm) | 25.4 | 27.9 | 34.8 | 47.8 | 47.8 | 63.8 | 80 |
| D1 (mm) | 45.2 | 47.2 | 54.1 | 70.1 | 66.8 | 85.1 | 100.1 |
| D2 (mm) | 42 | 45 | 57 | 54 | 73 | 70 | 89 |
| φF (mm) | 8 | 10 | 16 | 25 | 22 | 32 | 38 |
| H (mm) | 14 | 14 | 14 | 12 | 16 | 12 | 12 |
| K (mm) | 12 | 16 | 19 | 25 | 30 | 30 | 40 |
| N (mm) | 13.5 | 15.5 | 19.1 | 26.9 | 25.4 | 35.1 | 44.5 |
| P (mm) | 20 | 24 | 40 | 45 | 51 | 55 | 68 |
| R (mm) | -- | -- | -- | -- | -- | 25.9 | 25.9 |
| S (mm) | -- | -- | -- | 23.6 | -- | 29.0 | 34.5 |
| U (mm) | 35 | 40 | 50 | 42 | 64 | 55 | 70 |
| φU1 (mm) | 40 | 42 | 50 | -- | 64 | -- | -- |
| φV (mm) | 4.8 | 5.6 | 6.9 | 6.9 | 8.9 | 8.4 | 10.7 |
| X (mm) | -- | -- | -- | 28.7 | -- | 35.1 | 41.7 |
| Z° | 60 | 60 | 110 | -- | 110 | -- | -- |
| Weight (kg) | 0.5 | 0.5 | 1.1 | 2.0 | 1.6 | 3.5 | 5.5 |

公司地址：上海市静安区新闻路 1161 号 A1 室 邮编 200041

电话：021-51872743 传真：021-62275540

公司网站：www.fdzc.net E-mail:chengff@sh163.net

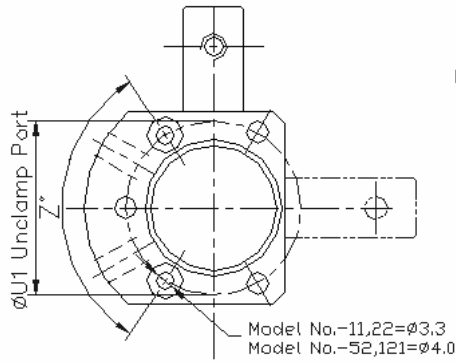
030 系列

转角油缸-下法兰式

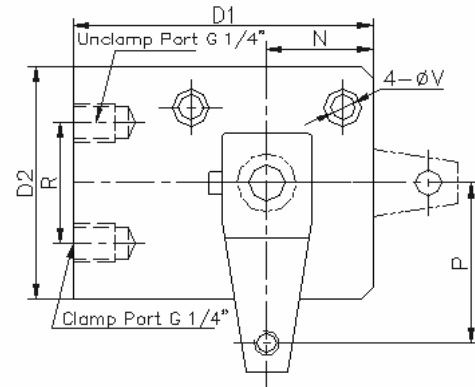
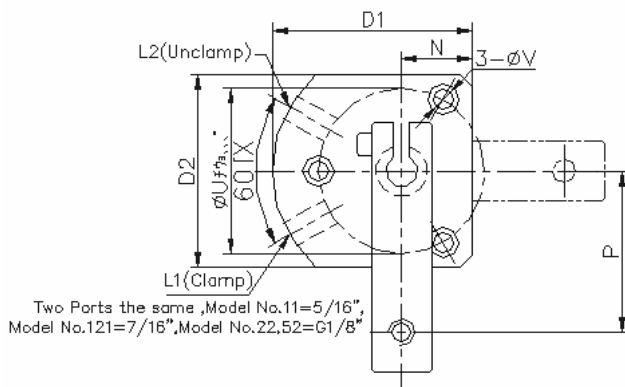
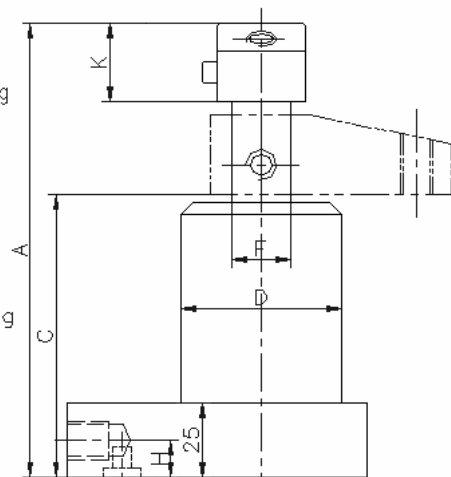
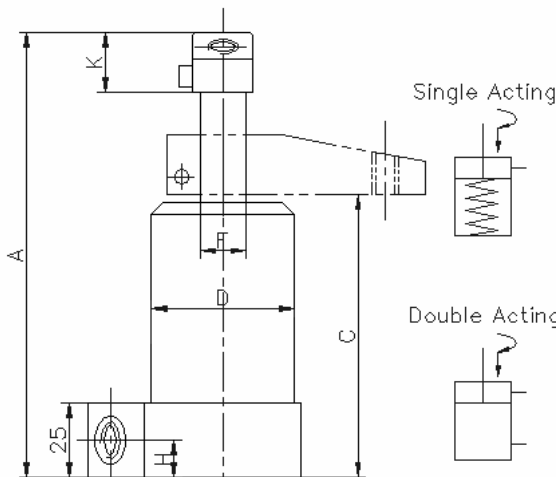
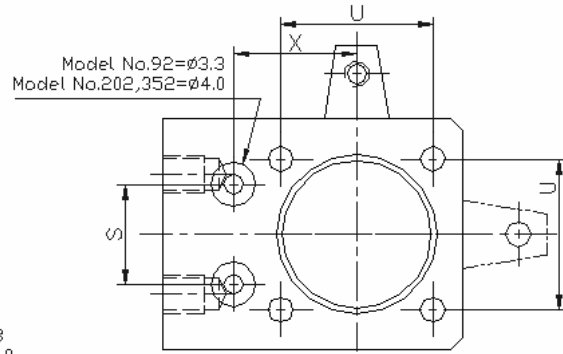
安装形式：管式与板式一体

Drawing

Model No.-11,22,52,121



Model No.-92,202,352

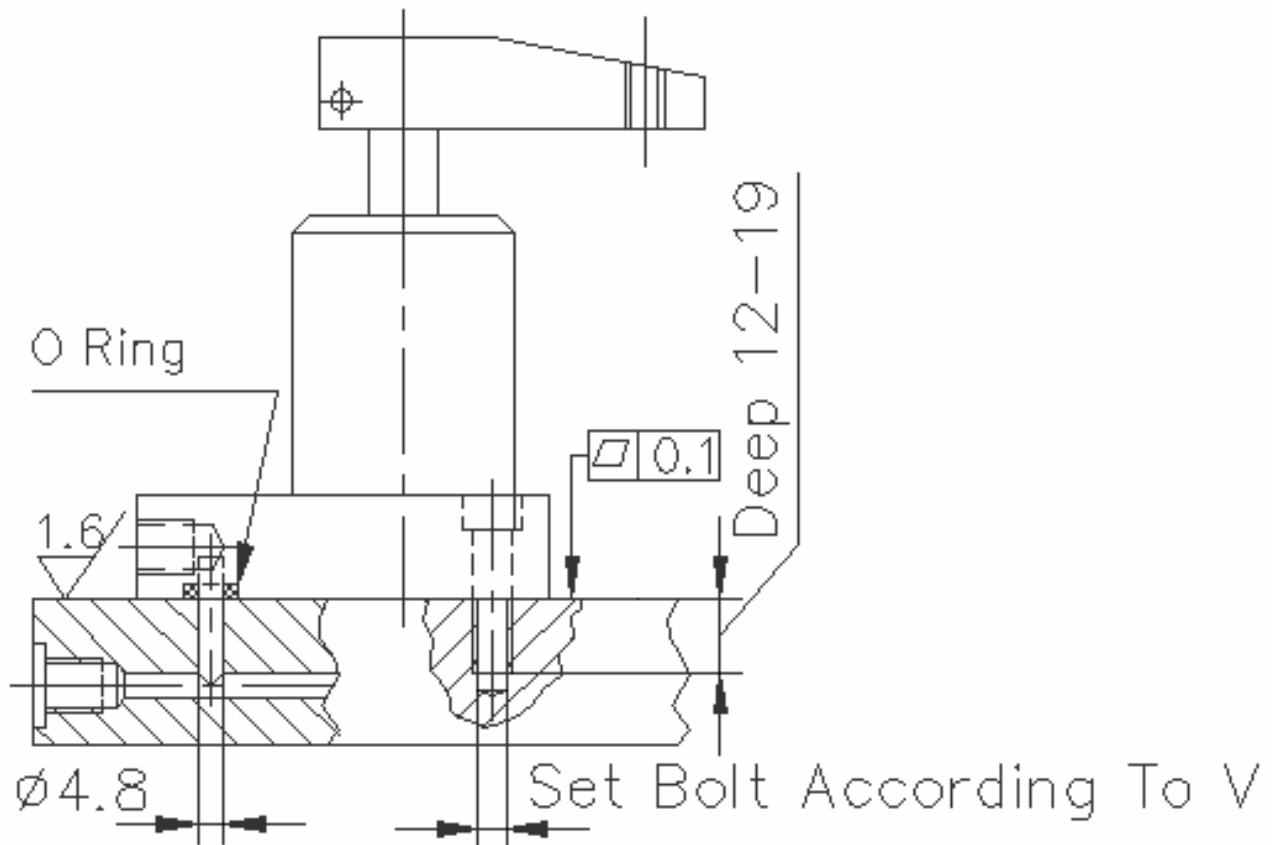


030 系列

转角油缸-下法兰式

安装形式: 管式与板式一体

Mounting Drawing



公司地址：上海市静安区新闻路 1161 号 A1 室 邮编 200041

电话：021-51872743 传真：021-62275540

公司网站：www.fdzc.net E-mail:chengff@sh163.net