



EZ-CLAMP



Rotary Joints

高品質 高速旋轉接頭 VER:4

COOLANT SYSTEM

Rotary Joints

公司簡介

「永續經營」是EZ-CLAMP成長的磐石，技術領先、質量第一和顧客至上是公司持續的信仰，EZ-CLAMP自成立以來所堅持一貫的原則「誠信負責、質量第一、顧客至上」，我們仍不斷的努力，以更專業的服務，更領先的技術，更強大的開發生產效率，以優越的質量與合理的價格爭取客戶的青睞。

專業是我們的本質，誠信是我們的原則，效率是我們的堅持，永續經營是我們的目標。本公司一直多年致力於專業開發高效率旋轉接頭系列產品，對於提高顧客生產效率、降低成本有莫大幫助，一切努力皆為達到客戶最滿意的境界，減低生產業者設備成本，提高工作效率。

未來EZ-CLAMP定當秉持一貫的態度為各位服務，願各界繼續給予認同及鼓勵，因為EZ-CLAMP堅持質量，致使公司業績逐年成長，營造出業主及承商雙贏的局面，以維護EZ-CLAMP最高的商譽，讓你真正以擁有EZ-CLAMP的商品而感到驕傲。

Sustainable Operation is the foundation for EZ-CLAMP to achieve lasting growth. "Technology Ahead, Quality First, Customer Foremost" is our persistent philosophy. Since the foundation, EZ-CLAMP has been adhering to the principle "Faithful & Responsible, Quality First, Customer Foremost". We will continue our efforts in winning love of customers, with more professional services, more advanced technology, higher development and production efficiency, superior quality and reasonable price.

Professional is our nature, honesty is our principle, efficiency is our pursuit, sustainable operation is our aim. We have been committed to developing high-efficiency rotary joint series products, which help customers lift productivity, lower cost significantly. All our efforts are paid for higher customer satisfaction, lower equipment cost, higher efficiency.

In the future, EZ-CLAMP will inherit our tenets as always, provide you with best services and products. We look forward to all friends' support and recognition. As EZ-CLAMP keeps improving quality, and continue achieving high growth, it will bring a win-win results to every owner and merchants. We make all efforts to protect goodwill of EZ-CLAMP, because we hope you will be proud of possession of EZ-CLAMP products.



目錄 INDEX

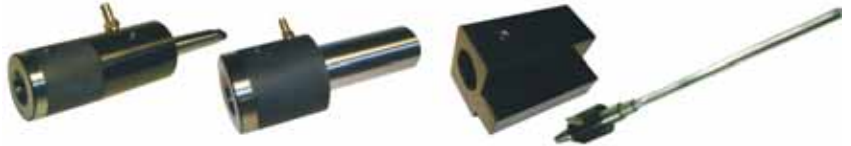
Page 2-3 (TC1500)

- 成本低:
Low cost
- 結構簡易:
Simple architecture
- 實用性高:
Pragmatical



不用發費高額資金便可達到加工深孔的目標，降低成本、提高工作效率。
User can get deep holes at lowest cost, while promoting efficiency.

Page 4-5 (RGC系列)



Page 6 (RS)

最大油壓壓力 150 BAR (50 RPM)
最大空氣壓力 10 BAR
最大轉速 850 (30 BAR)
最大溫度 100°C

標準材質:

轉 軸	合金鋼	應用範圍:
外 殼	合金鋼	一般工具機、工作站、
標準鏤紋	RC	液壓機械及專用機 - 等等。



Page 7 (RT)

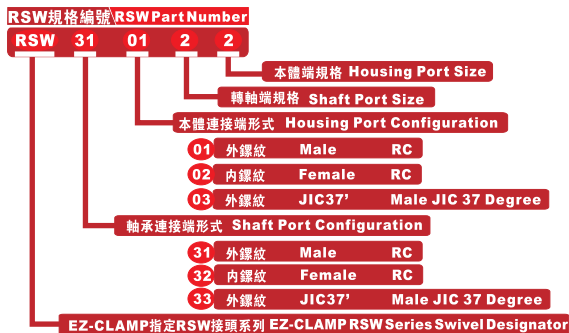
最大油壓壓力 210 BAR (50 RPM)
最大空氣壓力 10 BAR
最大轉速 750 (35 BAR)
最大溫度 100°C

標準材質:

轉 軸	合金鋼	應用範圍:
外 殼	合金鋼	一般工具機、工作站、
標準鏤紋	RC	液壓機械及專用機 - 等等。



Page 8 (如何訂購)



Page 9-11 (RSW系列)

- ※ 所有規格的額定工作壓力均為2500帕斯卡。
- ※ 扭矩值不會隨壓力大幅上升。
- ※ 防塵油封防止旋轉軸被環境污染而損壞。
- ※ 360度旋轉避免了因軟管產生無效半徑彎管、軟管扭曲和應力。
- ※ 外形緊湊，適用於狹小區域。
- ※ 2500 psi working pressure rating for all sizes.
- ※ Torque value does not significantly increase with pressure.
- ※ Dust seals protect the swivel from damaging environmental contaminants.
- ※ 360° swivel eliminates long radius bends, hose twist and stress that can cause premature hose failure.
- ※ Compact design to fit into tight areas.



Page 12 (R108F-TW2)

最大油壓壓力 50 BAR
最大空氣壓力 10 BAR
最大轉速 3000 RPM
最大溫度 100°C

標準材質:

轉 軸	合金鋼	應用範圍:
外 殼	合金鋼, 鋁合金	一般工具機、工作站、
標準鏤紋	RC	液壓機械及專用機 - 等等。



Page 13 (鏤紋規格代號)

- 英制鏤紋型式
- 美制鏤紋型式



☑ **TC1500**噴霧冷却單位適合在最短時間迅速對多數一般機械工具賦予一個可加工深孔的能力; 它的特點是便於移動及攜帶且只要連接到工廠中的空氣壓縮機上的氣壓供應。**TC1500**系統運作是將氣流推動霧化泵浦單位中, 再加壓到乳化液油上, 再經由壓縮空氣霧化後送到可調節壓力的接頭裏, 進入刀座後再通過鑽頭或槍鑽。它最主要的功能是藉由乳化液霧化後, 冷却刀具切削時刀口所產生的熱能, 一方面冷却刀具也同時將水蒸發, 而留下潤滑油來潤滑刀具口, 且空氣的壓力也將同時排出加工時所產生的加工物。

☑ 使用中所產生的正常動作壓力為8BAR, 霧化壓力使用時應該設定在4-6BAR這之間, 操作霧化流程時應該調整在可以看見輕微薄霧的產生後才可做鑽孔的行為, 在鑽孔期間必須注意所流出乳化液是微量流出, 使用時務必確切遵守指示。

我們同時提供標準和訂製規格, 并且對客戶提供特殊範圍之設計。

☑ **TC1500** Spoon-drift spray unit is able to provide most general mechanic tool with the capability to process deep holes within the shortest time. It is easy to move and carry, it only needs connect the gas pressure supply of air compressor in the factory. Working principle: **TC1500** pushes airflow to fogging pump unit, then add pressure to emulsified liquid oil, after fogging by compressed air, it is sent to the joint with adjustable pressure, after entering tool holder, it will pass drill or gun drill. Its most important function is to utilize the heat produced by cooling tool during cutting after fogging of emulsion, on the other hand, the water will be evaporated by cooling tool, the lubricant will leave to lubricate the cutter, and under the air pressure, the product produced during processing period will be discharged at the same.

☑ The normal movement pressure produced in operations is 8BAR, the spray pressure must be set within 4-6BAR. In spray process, user should make appropriate adjustment, do not drill holes until slight mist is produced. In addition, during drilling process, make sure only little emulsion flows out. Users must comply with operating instructions.

We offer standard and customized specifications, also provides special design on customer demand.

一般鑽削深孔的需求，已經在數百年前被人們重視和使用在特殊場所中。近數十年來，深孔加工這個技術才逐漸被發揮使用和推廣，深孔鑽能解決一般鑽頭和麻花鑽達不到的加工深孔和精度高的孔加工。如今現代高科技時代裏的深孔加工技術，已經演變不需依賴專用的深孔機床的條件，客戶只需要一套鑽孔冷卻系統和鑽孔旋轉刀座，配合現有的機床設備，便可解決加工深孔和超深孔的問題，來提高工作效率。



如今，在歐美市場中，深孔加工系統已經被廣泛的使用在各行各業，如模具行業、食品機械、航空機械、汽車製造業，包裝機械、木工機械等等。這一套深孔加工冷卻系統能充分的發揮解決現在所要的孔加工需求，最重要的是這一套系統能配合客戶現有的設備機床，以最低的成本結構、簡易的使用操作，就能加工出一個直線度高、光潔高精良的深孔尺寸。

General deep-hole drilling has been used in special applications for hundreds of years. In recent decades, deep-hole processing technology has been broadened and promoted gradually. Deep-hole drill can be applied in high-depth and high-precision hole processing applications in which general drill and spiral drill can't satisfy. Today, with the coming of high-tech era, deep-hole technology has been independent of deep-hole machine tool, customer only need a set of drilling cooling system and tool holder, plus existing machine tool, they can solve the problems of deep hole and ultra-deep hole processing, promoting efficiency significantly.

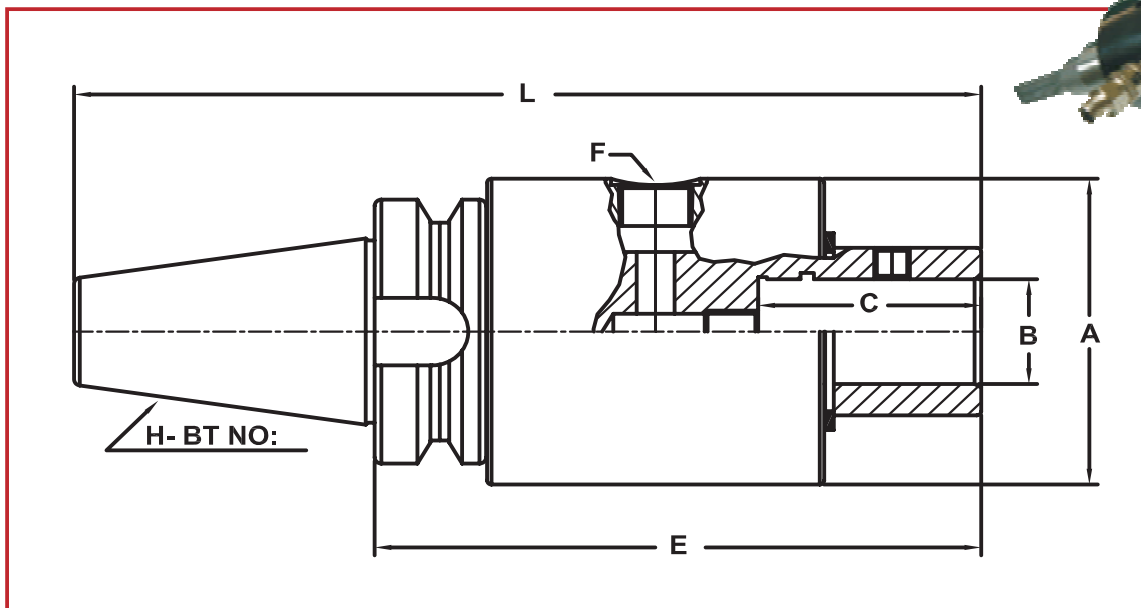
Today in European and American market, Deep-hole processing system has been widely used in various industries such as molding, food machinery, aerospace machinery, automobile manufacture, packaging machinery, carpentry machinery. Such a deep-hole processing & cooling system has satisfied current requirements of deep-hole processing, more importantly, this system caters for existing machine tool equipment of customers, customer only need spend lowest cost, grasp simple operations, then they can work out high-straightness, glossy and superior deep holes.

TC1500功能: Features of TC1500

- 成本結構低:** 不用發費高額資金便可達到加工深孔的目標，降低成本、提高工作效率。
Low cost User can get deep holes at lowest cost, while promoting efficiency.
- 結構簡易:** 安裝和拆卸容易，佔用的空間場所少，只要將冷卻系統和旋轉刀座裝置在旋轉主軸上。使用過後，可快速還原機床原貌。
Simple architecture Easy to install and disassemble, occupying smallest space. You only need install the cooling system and rotary tool holder on rotary axle. When the drilling is over, you can resume the original state of machine tool in the shortest time.
- 實用性高:** 一般機床皆可使用。如：數控搪、銑機床，立、臥式中心加工機、一般車床、銑床…等等。加工中途無須退屑，一般加工表面光潔度為 0.5~3.0 microns RMS
Pragmatical It is suitable for all general machine tools, e.g.: numerical control boring machine tool, milling machine tool, vertical, horizontal central processing machine tool, general lathe, milling machine. In general, surface finish is 0.5~3.0 microns RMS.

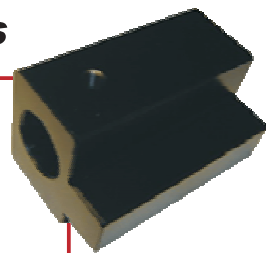
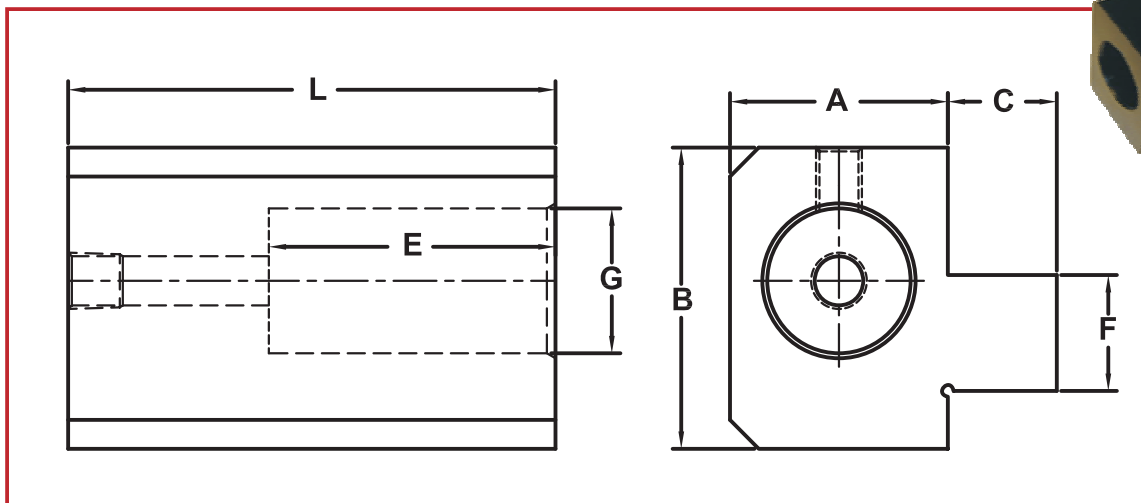
RGC Series

Gun Drills cutting tools **RGC-AW-BT** Series



TYPE	A	B _{h7}	C	E	F	L	H
RGC-025AW-BT30	60	3/4"	70	136	RC1/8"	186	BT30
RGC-034AW-BT30	66	25	50	121	RC1/8"	172	BT30
RGC-025AW-BT40	60	3/4"	70	141	RC1/8"	208	BT40
RGC-034AW-BT40	66	25	50	126	RC1/8"	194	BT40
RGC-025AW-BT50	66	25	50	136	RC1/8"	241	BT50
RGC-035AW-BT50	86	35	60	145	RC1/8"	250	BT50

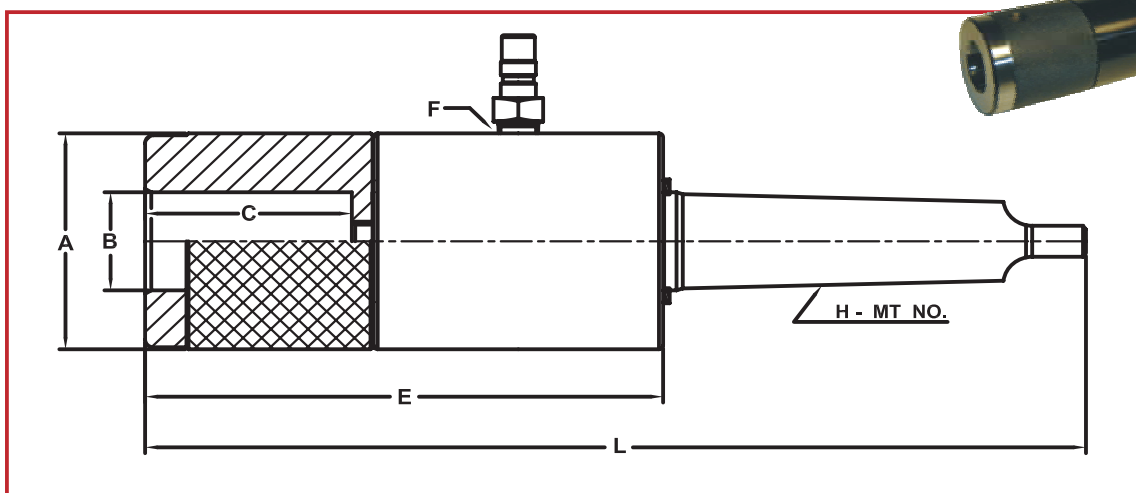
Gun Drills cutting tools **RGC-CL** Series



TYPE	A	B	C	E	F	G _{h7}	L
RGC-2025CL	57	50	19	50	20	25	85
RGC-2035CL	72	62	24	60	20	35	95

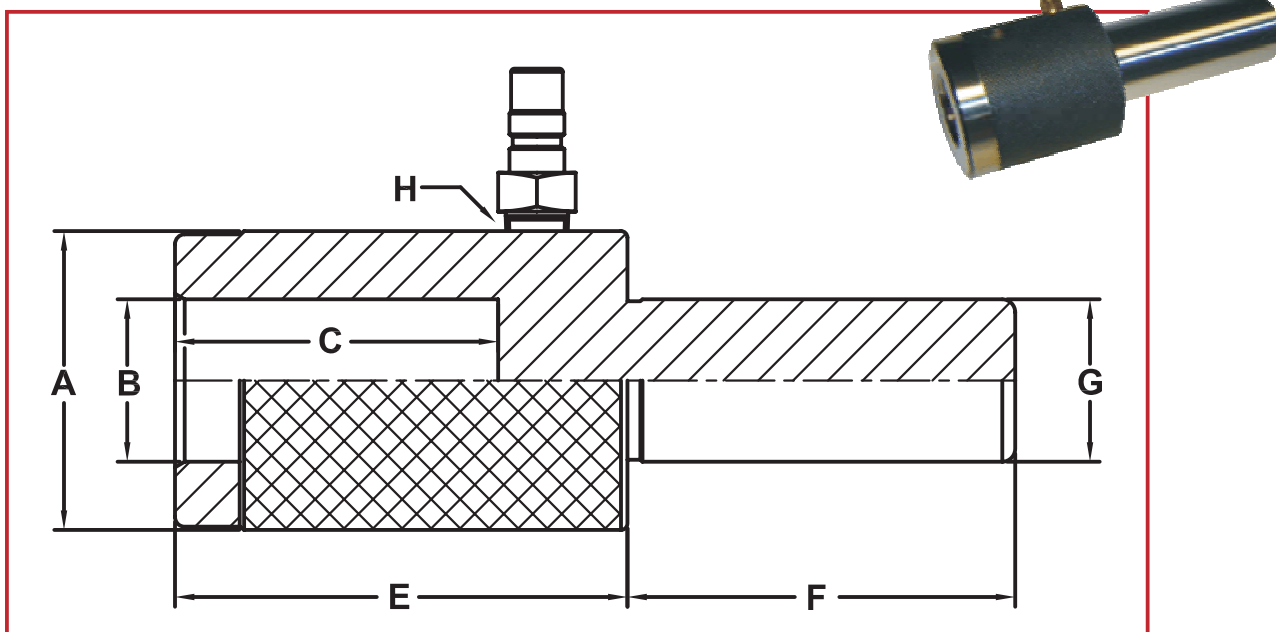
RGC Series

Gun Drills cutting tools **RGC-AW-MT** Series



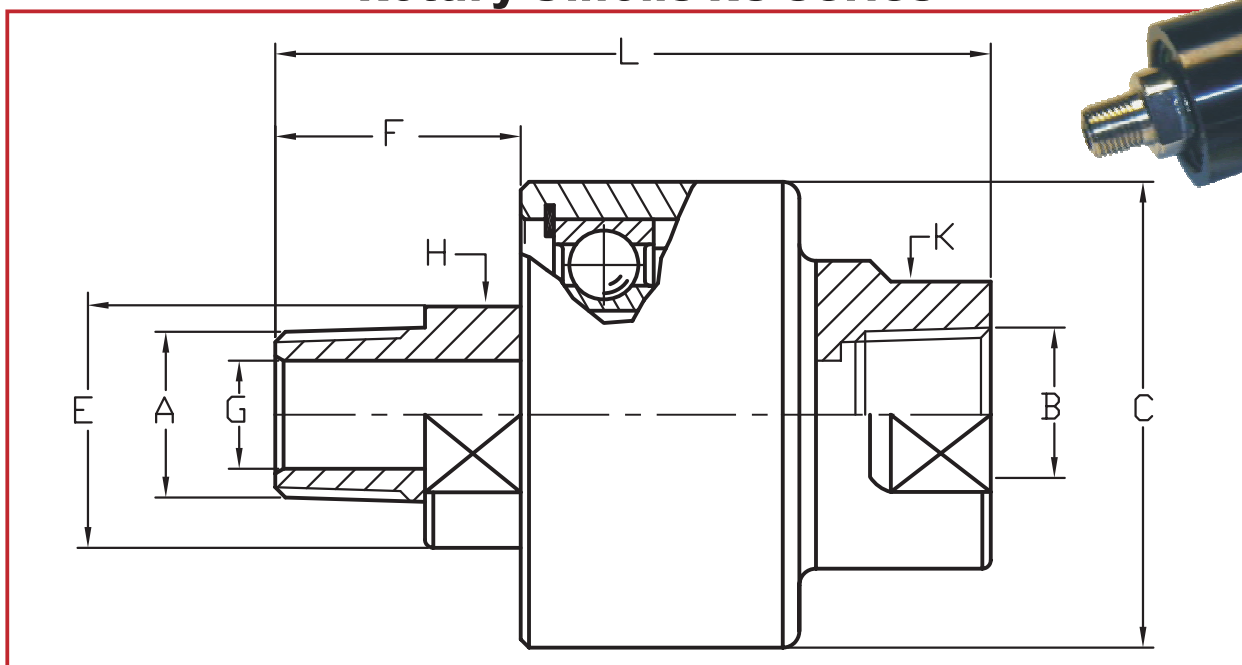
TYPE	A	B _{h7}	C	E	F	L	H
RGC-025AW-MT2	50	25	50	125	RC1/8"	208	MT2
RGC-025AW-MT3	55	25	50	125	RC1/8"	227	MT3
RGC-035AW-MT4	66	35	60	137	RC1/8"	265	MT4

Gun Drills cutting tools **RGC-ST** Series



TYPE	A	B _{h7}	C	E	F	G _{h7}	H
RGC-1616ST	33	16	40	60	50	16	RC1/8"
RGC-2525ST	46	25	50	70	60	25	RC1/8"
RGC-3532ST	58	35	60	80	70	32	RC1/8"

Rotary Unions RS Series



TYPE	A	B	C	E	F	G	H	K	L
RS-014	1/4"RC	1/4"RC	39	21	22	8	17	19	68
RS-038	3/8"RC	3/8"RC	42	23	23	10	19	21	70
RS-012	1/2"RC	1/2"RC	56	32	29.5	13	26	32	86
RS-034	3/4"RC	3/4"RC	66	37	30.5	16	32	36	92
RS-100	1"RC	1"RC	82	47	36	24	41	46	108
RS-114	1-1/4"RC	1-1/4"RC	93	57	42	30	50	55	120
RS-112	1-1/2"RC	1-1/2"RC	112	68	42	36	60	70	125
RS-200	2"RC	2"RC	117	74	50	46	65	80	142



最大油壓壓力

150 BAR (50 RPM)

Max. Hydraulic

最大空氣壓力

10 BAR

Max. Air

最大轉速

850 (30 BAR)

Max. RPM

最大溫度

100°C

Max. Temp



標準材質:

轉 軸

合金鋼

外 殼

合金鋼

標準螺紋

RC

Standard Materials Service:

Shaft -- alloy steel

Housing -- alloy steel

Standard Threads: RC



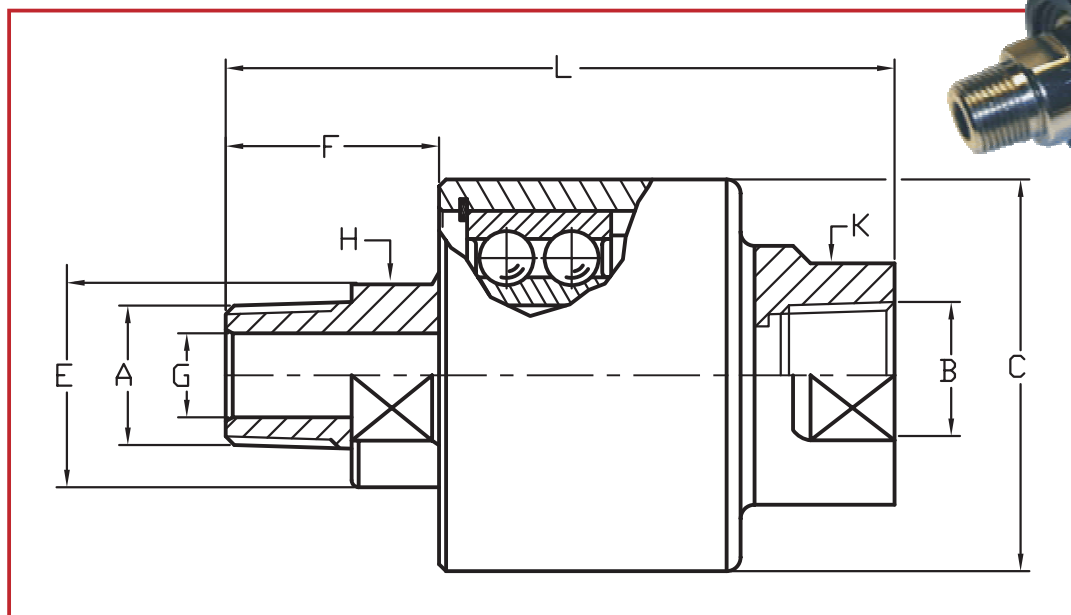
應用範圍:

一般工具機、工作站、
液壓機械及專用機 – 等等。

Applications :

**Generic tools machines,
Transfers, Liquid press
machine, Appropriative
machine...ect**

Rotary Unions RT Series



TYPE	A	B	C	E	F	G	H	K	L
RT-014	1/4"RC	1/4"RC	39	21	23	6	17	19	76
RT-038	3/8"RC	3/8"RC	42	23	25	8	19	21	78
RT-012	1/2"RC	1/2"RC	56	32	30.5	12	26	32	95.5
RT-034	3/4"RC	3/4"RC	63	37	31.5	15	32	36	100.5
RT-100	1"RC	1"RC	86	47	37	22	41	46	121
RT-114	1-1/4"RC	1-1/4"RC	93	57	43	26	50	55	135
RT-112	1-1/2"RC	1-1/2"RC	102	62	43	30	55	65	138
RT-200	2"RC	2"RC	117	72	51	40	65	80	158



最大油壓壓力 **210 BAR (50 RPM)**
最大空氣壓力 **10 BAR**
最大轉速 **750 (35 BAR)**
最大溫度 **100°C**

Max. Hydraulic
Max. Air
Max. RPM
Max. Temp



標準材質:
轉 軸 **合金鋼**
外 殼 **合金鋼**
標準鏢紋 **RC**

Standard Materials Service:
Shaft -- alloy steel
Housing -- alloy steel
Standard Threads: RC



應用範圍:
一般工具機、工作站、
液壓機械及專用機 – 等等。

Applications :
Generic tools machines,
Transfers, Liquid press
machine, Appropriative
machine...ect

如何訂購 How To Order

簡介: Introduction

RSW系列旋轉接頭產品種類具有壓力平衡，是對快速連接合部（Quick Coupling Division）的旋轉接頭系列產品種類的平衡補充，本產品能有效地防止因水壓部件運動產生的軟管扭曲、扭矩和應力，可以將旋轉的負載邊減至最小。

The RSW Series Swivel product line complements the Quick Coupling Division's rotary joint Series swivel line by offering a pressure balanced. This product is great for eliminating hose twist, torque and stress caused by the movement of the hydraulic components where side load to the swivel can be minimized.

特點: Features

- ※ 所有規格的額定工作壓力均為2500帕斯卡。
- ※ 扭矩值不會隨壓力大幅上升。
- ※ 防塵油封防止旋轉軸被環境污染而損壞。
- ※ 360度旋轉避免了因軟管產生無效半徑彎管、軟管扭曲和應力。
- ※ 外形緊湊，適用於狹小區域。
- ※ 2500 psi working pressure rating for all sizes.
- ※ Torque value does not significantly increase with pressure.
- ※ Dust seals protect the swivel from damaging environmental contaminants.
- ※ 360° swivel eliminates long radius bends, hose twist and stress that can cause premature hose failure.
- ※ Compact design to fit into tight areas.

RSW規格編號 RSW Part Number

RSW 31 01 2 2

本體端規格 Housing Port Size

轉軸端規格 Shaft Port Size

本體連接端形式 Housing Port Configuration

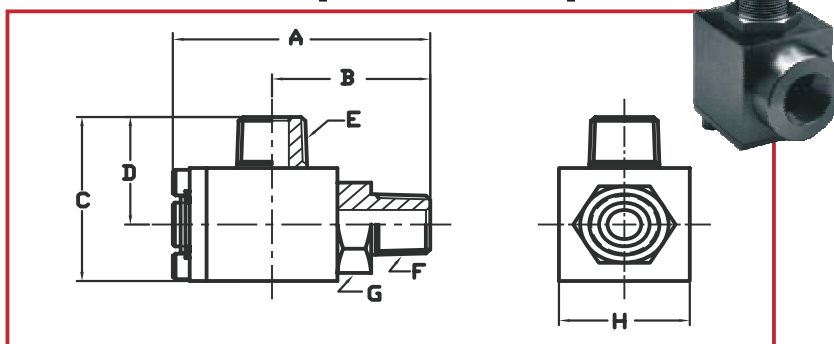
- | | | | |
|----|-----|--------|--------------------|
| 01 | 外鏢紋 | Male | RC |
| 02 | 內鏢紋 | Female | RC |
| 03 | 外鏢紋 | JIC37' | Male JIC 37 Degree |

軸承連接端形式 Shaft Port Configuration

- | | | | |
|----|-----|--------|--------------------|
| 31 | 外鏢紋 | Male | RC |
| 32 | 內鏢紋 | Female | RC |
| 33 | 外鏢紋 | JIC37' | Male JIC 37 Degree |

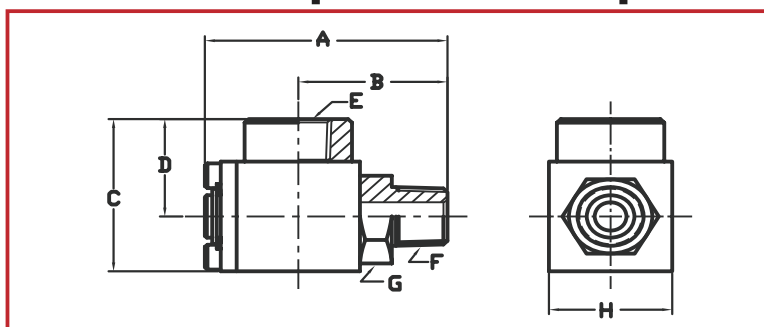
EZ-CLAMP公司指定RSW接頭系列 EZ-CLAMP RSW Series Swivel Designator

Male Pipe-Male Pipe



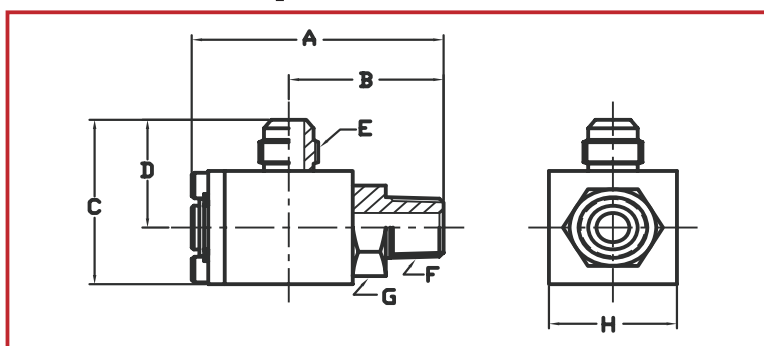
Part Number	A	B	C	D	E	F	G	H
RSW3101-2-2	59	36.5	43	28.5	1/4"RC	1/4"RC	21	29
RSW3101-3-3	61	37.5	45	29.5	3/8"RC	3/8"RC	23	31
RSW3101-4-4	77	47.5	56	37	1/2"RC	1/2"RC	27	38
RSW3101-6-6	81	50	60	39.5	3/4"RC	3/4"RC	32	41

Male Pipe-Female Pipe

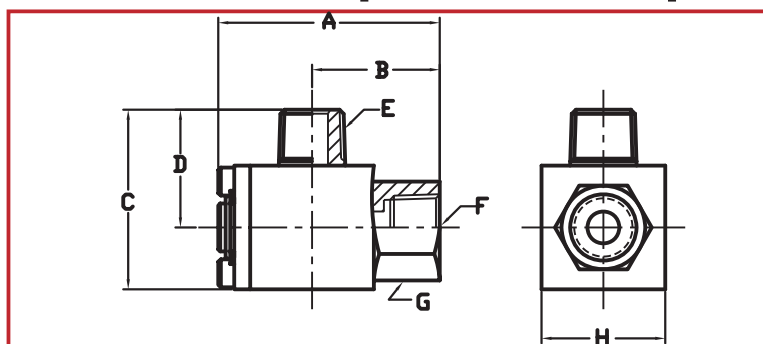


Part Number	A	B	C	D	E	F	G	H
RSW3102-2-2	59	36.5	40	25.5	1/4"RC	1/4"RC	21	29
RSW3102-3-3	61	37.5	43	27.5	3/8"RC	3/8"RC	23	31
RSW3102-4-4	77	47.5	53	34	1/2"RC	1/2"RC	27	38
RSW3102-6-6	81	50	58	37.5	3/4"RC	3/4"RC	32	41

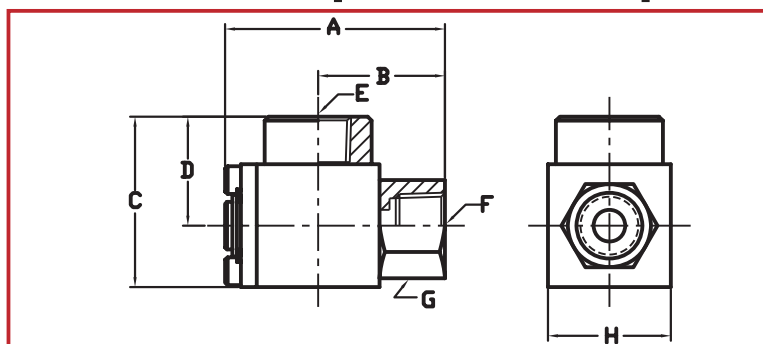
Male Pipe-Male 37° Flare



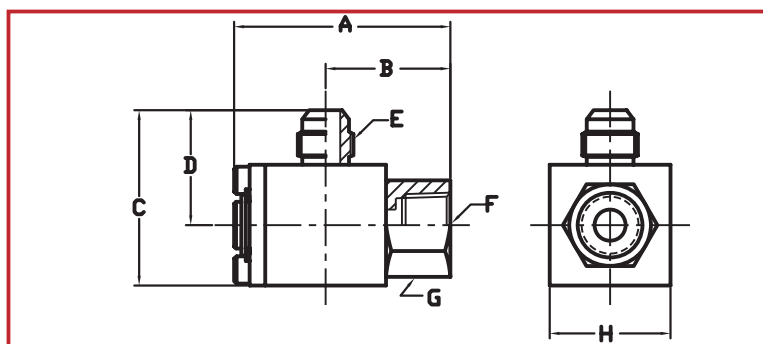
Part Number	A	B	C	D	E	F	G	H
RSW3103-2-2	59	36.5	43	28.5	7/16-20UNF	1/4"RC	21	29
RSW3103-3-3	61	37.5	45	29.5	9/16-18UNF	3/8"RC	23	31
RSW3103-4-4	77	47.5	55	36	3/4-16UNF	1/2"RC	27	38
RSW3102-6-6	81	50	63	42.5	1-1/16-12UNF	3/4"RC	32	41

Female Pipe-Female Pipe


Part Number	A	B	C	D	E	F	G	H
RSW3201-2-2	53.5	31	43	28.5	1/4"RC	1/4"RC	21	29
RSW3201-3-3	55.5	32	45	29.5	3/8"RC	3/8"RC	23	31
RSW3201-4-4	69.5	40	56	37	1/2"RC	1/2"RC	27	38
RSW3201-6-6	74	43	60	39.5	3/4"RC	3/4"RC	32	41

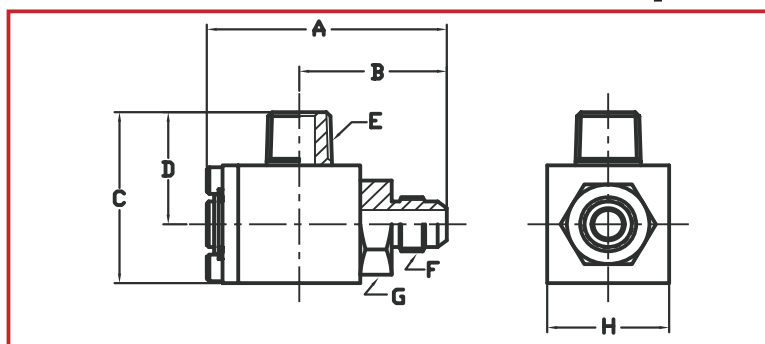
Female Pipe-Female Pipe


Part Number	A	B	C	D	E	F	G	H
RSW3202-2-2	53.5	31	40	25.5	1/4"RC	1/4"RC	21	29
RSW3202-3-3	55.5	32	43	27.5	3/8"RC	3/8"RC	23	31
RSW3202-4-4	69.5	40	53	34	1/2"RC	1/2"RC	27	38
RSW3202-6-6	74	43	58	37.5	3/4"RC	3/4"RC	32	41

Female Pipe-Male 37° Flare


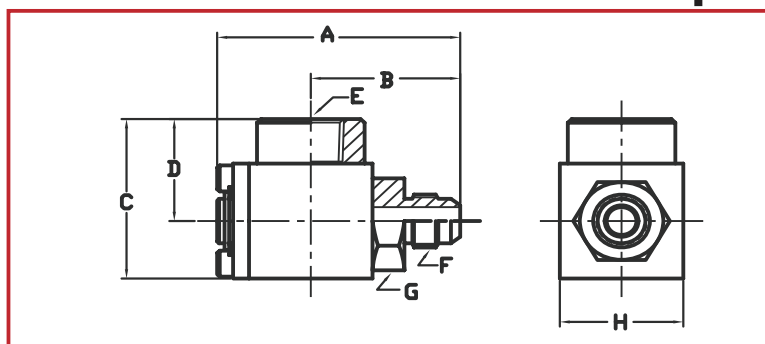
Part Number	A	B	C	D	E	F	G	H
RSW3203-2-2	53.5	31	43	28.5	7/16-20UNF	1/4"RC	21	29
RSW3203-3-3	55.5	32	45	29.5	9/16-18UNF	3/8"RC	23	31
RSW3203-4-4	69.5	40	55	36	3/4-16UNF	1/2"RC	27	38
RSW3202-6-6	74	43	63	42.5	1-1/16-12UNF	3/4"RC	32	41

Male 37° Flare-Male Pipe



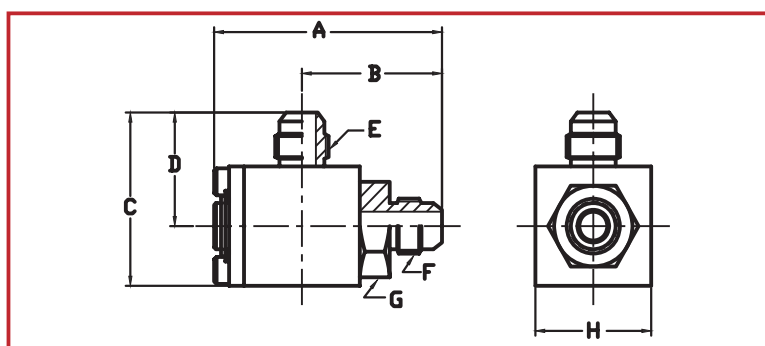
Part Number	A	B	C	D	E	F	G	H
RSW3301-2-2	59	36.5	43	28.5	1/4"RC	7/16-20UNF	21	29
RSW3301-3-3	61	37.5	45	29.5	3/8"RC	9/16-18UNF	23	31
RSW3301-4-4	76	46.5	56	37	1/2"RC	3/4-16UNF	27	38
RSW3301-6-6	84	53	60	39.5	3/4"RC	1-1/16-12UNF	32	41

Male 37° Flare-Female Pipe



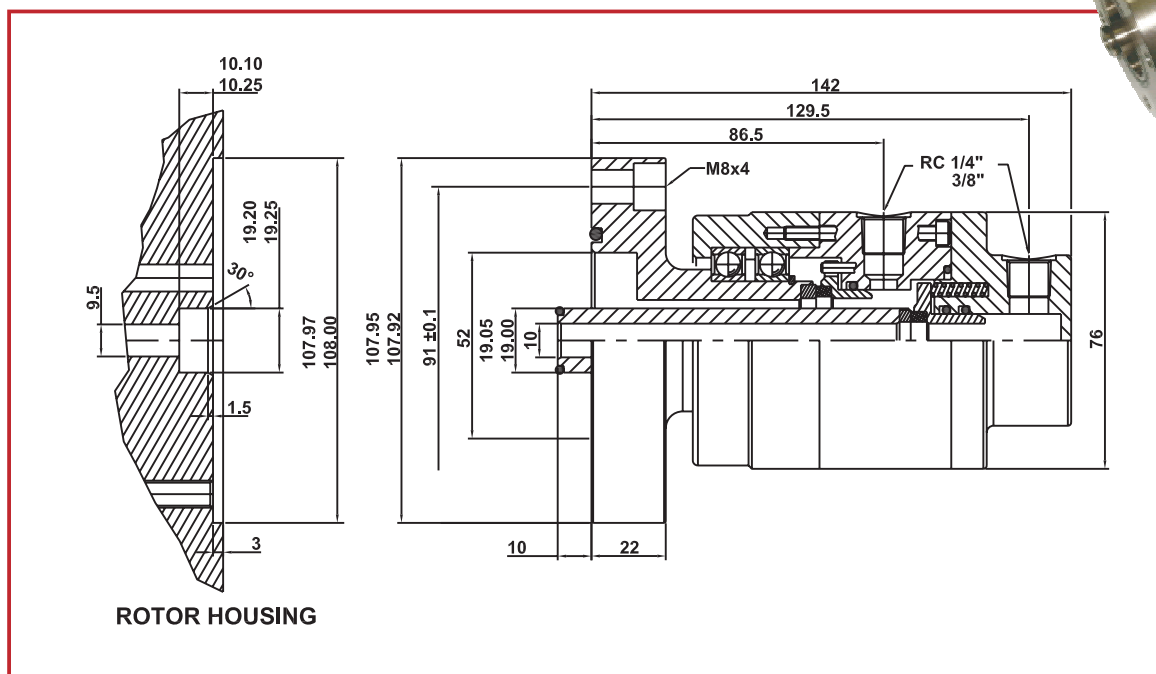
Part Number	A	B	C	D	E	F	G	H
RSW3302-2-2	59	36.5	40	25.5	1/4"RC	7/16-20UNF	21	29
RSW3302-3-3	61	37.5	43	27.5	3/8"RC	9/16-18UNF	23	31
RSW3302-4-4	76	46.5	53	34	1/2"RC	3/4-16UNF	27	38
RSW3302-6-6	84	53	58	37.5	3/4"RC	1-1/16-12UNF	32	41

Male 37° Flare-Male 37° Flare



Part Number	A	B	C	D	E	F	G	H
RSW3303-2-2	59	36.5	43	28.5	7/16-20UNF	7/16-20UNF	21	29
RSW3303-3-3	61	37.5	45	29.5	9/16-18UNF	9/16-18UNF	23	31
RSW3303-4-4	76	46.5	55	36	3/4-16UNF	3/4-16UNF	27	38
RSW3302-6-6	84	53	63	42.5	1-1/16-12UNF	1-1/16-12UNF	32	41

Rotary Unions R108F-TW2 Series



最大油壓壓力

50 BAR

Max. Hydraulic

最大空氣壓力

10 BAR

Max. Air

最大轉速

3000 RPM

Max. RPM

最大溫度

100°C

Max. Temp



標準材質:

轉 軸

合金鋼

Standard Materials Service:

Shaft -- alloy steel

外 殼

合金鋼, 鋁合金

Housing -- alloy steel, aluminum

標準鏢紋

RC

Standard Threads: RC



應用範圍:

一般工具機、工作站、
液壓機械及專用機 - 等等。

Applications :

**Generic tools machines,
Transfers, Liquid press
machine, Appropriative
machine...ect**

鏢紋規格代號

UNC	Unified coarse thread series
UNEF	Unified extra-fine thread series
UNF	Unified fine thread series
UNJ	Unified constant-pitch thread a0.15011p to 0.18042p
UNJC	Unified coarse thread a0.15011p to 0.18042p
UNJEF	Unified extra-fine thread series a0.15011p to 0.18042p
UNR	Unified fine thread series a0.15011p to 0.18042p
UNRC	Unified constant-pitch thread a0.108p to 0.144p
UNRF	Unified coarse thread series a0.108p to 0.144p
UNREF	Unified fine thread series a0.108p to 0.144p
UNM	Unified miniature thread series
UNS	Unified thread of special diameters

統一粗鏢紋
統一特細鏢紋
統一細鏢紋
守恒統一鏢距 0.15011p to 0.18042p
統一粗鏢紋 0.15011p to 0.18042p
統一特細鏢紋 0.15011p to 0.18042p
守恒統一鏢紋 0.15011p to 0.18042p
統一粗鏢紋 0.108 p to 0.144p
統一細鏢紋 0.108 p to 0.144p
統一特細鏢紋 0.108 p to 0.144p
統一微鏢紋
統一特殊鏢紋

英制鏢紋型式

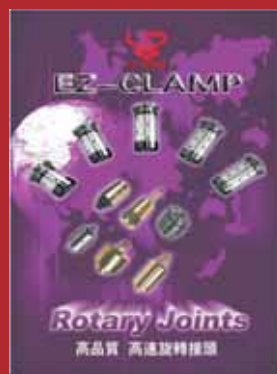
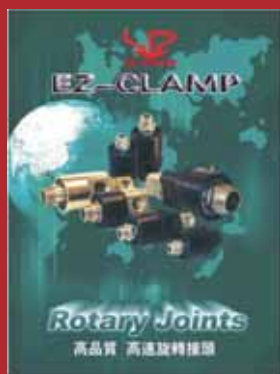
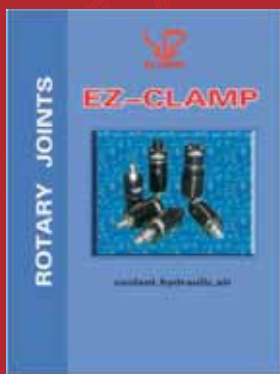
BSW	British Standard Whitworth Coarse Thread Series
BSF	British Standard Fine Thread Series
BSPT	British Standard Taper Pipe Thread
BSPP	British Standard Pipe (Parallel) Thread
WHIT	Whitworth Standard Spec. Thread
BA	British Assoc. Standard Thread

英制標準惠式粗鏢紋
英制標準推拔管鏢紋
英制標準推拔管鏢紋
英制標準直管鏢紋
英制標準特殊鏢紋
英制標準協會標準鏢紋

美制鏢紋型式

AMO	American S standards microscope objective threads
ANPT	Aeronautical National form taper pipe threads
API	American. Petrol. 1nst. Sand. Taper pipe threads. 1:16
NBUTT	National Buttress threads
8N	American National 8-thread series
12N	American National 12-thread series
16N	American National 16-thread series
NC	American National coarse thread series
NEF	American National extra-fine thread series
NF	American National fine thread series
NGO	National gas outlet threads
NGS	National gas straight threads
NGT	National Gas taper threads
NH	American National hose and firehose coupling threads
NPSC	American standards straight pipe threads
NPSF	Dryseal American standards straight pipe threads
NPSH	American standards straight pipe threads for loose-fitting
NPSI	Dryseal American standards female straight pipe threads
NPSL	American standards straight pipe threads for loose-fitting
NPSM	American standards straight pipe threads for loose-fitting
NPT	American standards taper pipe threads for general
NPTF	Dryseal American standards taper pipe threads
NPTR	American standards taper pipe threads for railing joints
NR	American National thread a 0.108p to 0.144p

美國標準顯微鏡鏢紋
航空機用管鏢紋,錐管鏢紋
石油工業用錐度鏢紋,錐度 1:16
美制鋸齒型鏢紋
美制8紋制鏢紋
美制12紋制鏢紋
美制16紋制鏢紋
美制粗鏢紋
美制特細鏢紋
美制細鏢紋
美制出氣口鏢紋
美制出氣直管鏢紋
美制出氣錐管鏢紋
美制軟管和消防軟管接頭鏢紋
美制管路標準直管鏢紋
美制管路標準直管鏢紋幹式封襯
美制標準軟管機械接頭用
美制管路標準內直管鏢紋,幹式
美制標準軟管機械接頭付有螺帽
美制管路標準直管鏢紋機械結合用
美制標準錐度鏢紋,一般用途
美制標準錐度鏢紋,幹式封襯
美制標準錐度鏢紋,欄杆接合用
美制鏢紋有0.108p至0.144p



AGENT



EZ-CLAMP COMPANY LTD.

臺灣臺北縣鶯歌鎮中正三路156巷41號

TEL:886-2-26788960

FAX:886-2-26788962

Http://www.ez-clamp.com.tw

e-mail:ez.clamp@msa.hinet.net

2007